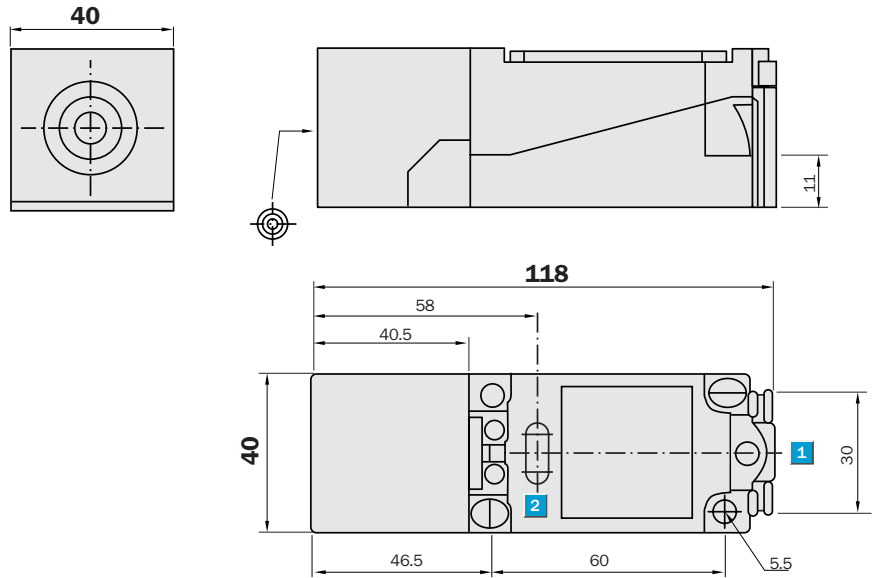
 **Sensing range**
15 mm

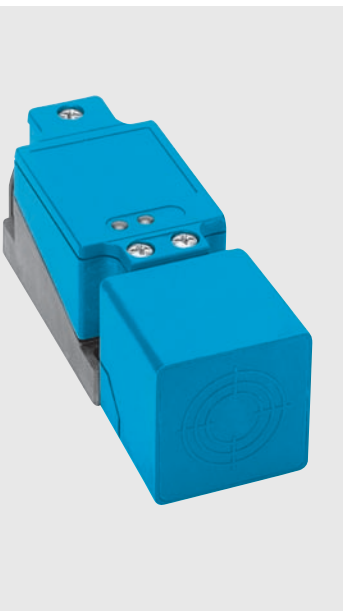
Inductive sensor

- Variable switching zone
- Broad supply voltage range in AC
- Switching output: NO/NC
- Enclosure rating IP 68
- Terminal connection

Dimensional drawing

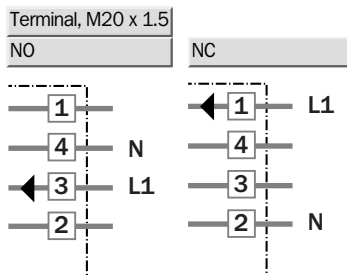


- 1 Connection
- 2 Display LED



Connection type

IQ40-15BAP-KK1



Technical specifications		IQ40-	15BAP-KK1											
Sensing range S_n	15 mm													
Electrical configuration	AC 2-wire													
Supply voltage V_s	AC 20 ... 253 V													
Voltage drop U_d	≤ 12 V													
Continuous current I_a	≤ 500 mA													
Intermittent current I_k	3 A (20 ms/0.1Hz)													
Residual current	≤ 1.95 mA													
Temperature drift, of s_r	± 10 %													
EMC	According to EN 60947-5-2													
Output function	Programmable													
Installation	Flush													
Connection type	Cable gland, Terminal, M20 x 1.5													
Enclosure rating	IP 68 ¹⁾													
VDE protection class	□													
Max. switching frequency	20 Hz													
Dimensions	40 x 40 x 118 mm ²⁾													
Short-circuit protection	✓ ³⁾													
Reverse polarity protection	✓													
Power-up pulse suppression	✓													
Shock/vibration stress	30 g, 11 ms/10 ... 55 Hz, 1 mm													
Ambient temperature T_a	-25 °C ... +70 °C													
Housing material	Plastic, PBT													
¹⁾ according to EN 60529	²⁾ Width x height x depth		³⁾ (pulsed)											

Order information

Type	Order no.
IQ40-15BAP-KK1	6 025 816