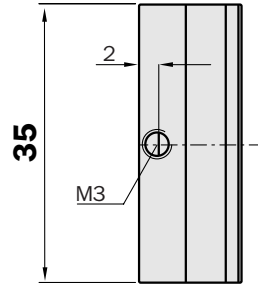
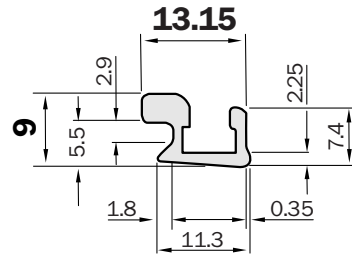


Dimensional drawing

- Mountable from the top
- MZT1/RZT1 sensors can be mounted from above onto mounting rails
- Stable aluminium profile
- Fits tightly on dovetail groove (no slipping)
- Material: Aluminium alloy AlMgSi 0.5



Note:

The profile dimensions of the BEF-KHZ-ST1 mounting system correspond to the groove dimensions of the MZK1, MZK3, RZK1 and RZK3 magnetic cylinder sensors. Compare the dimensions of the groove with the dimensions of the mounting rails.

Technical specifications		BEF-	KHZ-ST1											
Material	Aluminium													



The mounting bracket BEF-KHZ-ST1 makes it possible to mount magnetic cylinder sensors MZT6/RZT6 and MTZ1/RZT1 series on short-stroke cylinders.

Ordering information	
Type	Order no.
BEF-KHZ-ST1	2 022 703