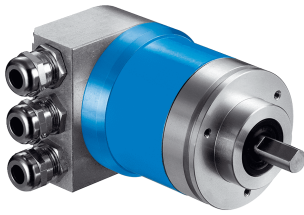


## ATM60 PROFIBUS

Reliable, established and modular

**ABSOLUTE ENCODERS**

**SICK**  
Sensor Intelligence.



### Technical data overview

<b>Encoder design</b>	Multiturn
<b>Shaft type</b>	Solid shaft, face mount flange Solid shaft, Servo flange Blind hollow shaft
<b>Shaft diameter</b>	Solid shaft, face mount flange 10 mm Solid shaft, Servo flange 6 mm Blind hollow shaft 15 mm <sup>1)</sup>
<b>Connection type</b>	Connection adapter for PROFIBUS
<b>Communication interface</b>	PROFIBUS DP
<b>Communication Interface detail</b>	DPV0
<b>Number of steps per revolution (max. resolution)</b>	
<b>Max. resolution (number of steps per revolution x number of revolutions)</b>	13 bit x 13 bit (8,192 x 8,192)
<b>Programmable/configurable</b>	Over PLC-Engineering-Tool

<sup>1)</sup> Collets for 6, 8, 10, 12, 14 mm and 1/4", 3/8" and 1/2" as accessories, separate order item. For 15 mm shaft diameter collet is not needed.

### Product description

The ATM60 PROFIBUS absolute multiturn encoder from SICK provides reliable positional and speed information even in harsh ambient conditions, with a resolution of up to 26 bits. This product family, which is proven in the field, is based on the principle of magnetic measurement. The 13-bit singleturn range is scanned by a sensor using permanent magnetic elements. The 13-bit multiturn range consists of a magnetic reduction gear. Equipped with a zero-set pushbutton, the encoder can be easily set to zero or to any other user-programmed value on site. The connection adapter, which can be removed from the device, makes user maintenance and mounting easy. With its magnetic scanning, rugged IP67 enclosure rating and high level of resistance to shock and vibration, the ATM60 is ideal for use in harsh conditions.

### At a glance

- Extremely rugged, tried-and-tested absolute multiturn encoder with a resolution of up to 26 bits
- Mechanical interface: face mount flange, servo flange, blind hollow shaft, and extensive adapter accessories
- Zero-set and preset functions via hardware or software
- No battery required
- Electrical interface: PROFIBUS DP as per IEC61158 / RS 485, electrically isolated.
- Electronically adjustable, configurable resolution
- Magnetic scanning

### Your benefits

- Fewer variants are required since one freely programmable encoder supports all singleturn and multiturn resolutions
- Versatility thanks to a variety of electrical connection adapters (3x PG, 3x M12)
- Maintenance-free encoder, long service life
- A base device that is flexible in application thanks to easily interchangeable collets for the blind hollow shaft
- Quick commissioning using the zero-set/preset function either at the press of the button on the device or via software
- Safer applications thanks to highly reliable shock and vibration resistance
- Worldwide availability and service

### Fields of application

- Measurement of absolute position in various machines and system such as wind power and solar plants, material transport equipment, textile machines, packaging systems, rollers, harbor facilities, printing machines

## Ordering information

Other models and accessories → [www.sick.com/ATM60\\_PROFIBUS](http://www.sick.com/ATM60_PROFIBUS)

- **Mechanical design:** Solid shaft, face mount flange

Singleturn or multiturn version	Mechanical design	Connection type	Type	Part no.
Multiturn	Solid shaft face mount flange 10 mm x 19 mm	Connection adapter for PROFIBUS <sup>1)</sup>	ATM60-P4H13X13	1030013

<sup>1)</sup> Please order the bus adaptor separately.

- **Mechanical design:** Solid shaft, Servo flange

Singleturn or multiturn version	Mechanical design	Connection type	Type	Part no.
Multiturn	Solid shaft Servo flange 6 mm x 10 mm	Connection adapter for PROFIBUS <sup>1)</sup>	ATM60-P1H13X13	1030014

<sup>1)</sup> Please order the bus adaptor separately.

- **Mechanical design:** blind hollow shaft

Singleturn or multiturn version	Mechanical design	Connection type	Type	Part no.
Multiturn	Blind hollow shaft 15 mm <sup>1)</sup>	Connection adapter for PROFIBUS <sup>2)</sup>	ATM60-PAH13X13	1030015

<sup>1)</sup> Collets for 6, 8, 10, 12, 14 mm and 1/4", 3/8" and 1/2" as accessories, separate order item. For 15 mm shaft diameter collet is not needed.

<sup>2)</sup> Please order the bus adaptor separately.

## SICK AT A GLANCE

SICK is one of the leading manufacturers of intelligent sensors and sensor solutions for industrial applications. A unique range of products and services creates the perfect basis for controlling processes securely and efficiently, protecting individuals from accidents and preventing damage to the environment.

We have extensive experience in a wide range of industries and understand their processes and requirements. With intelligent sensors, we can deliver exactly what our customers need. In application centers in Europe, Asia and North America, system solutions are tested and optimized in accordance with customer specifications. All this makes us a reliable supplier and development partner.

Comprehensive services complete our offering: SICK LifeTime Services provide support throughout the machine life cycle and ensure safety and productivity.

For us, that is “Sensor Intelligence.”

## WORLDWIDE PRESENCE:

Contacts and other locations –[www.sick.com](http://www.sick.com)