



V2D611G-MMSBE4

GLS6

IMAGE-BASED CODE READERS

SICK
Sensor Intelligence.



Ordering information

| Type | Part no. |
|----------------|----------|
| V2D611G-MMSBE4 | 1114539 |

Other models and accessories → www.sick.com/GLS6



Detailed technical data

Features

| | |
|---------------------------------|---|
| Task | Identifying - 1D code Identifying - 2D code Localizing, navigating and guiding - Localizing Localizing, navigating and guiding - Guiding |
| Optical focus | Adjustable focus (manually) |
| Illumination | Integrated |
| Illumination color | Amber, LED, Visible, 617 nm, ± 15 nm Blue, LED, Visible, 470 nm, ± 15 nm |
| LED class | 1 (IEC 62471:2006-07, EN 62471:2008-09) |
| Feedback spot | LED, Visible, green, 525 nm, ± 15 nm LED, Visible, Red, 635 nm, ± 15 nm |
| Alignment aid | Laser, Visible, 630 nm ... 680 nm |
| Laser class | 1, complies with 21 CFR 1040.10 except for the conformance according to "Laser Notice No. 50" from June 24, 2007 (IEC 60825-1:2014, EN 60825-1:2014+A11:2021) |
| Reading distance | 50 mm ... 300 mm |
| Overrun speed | ≤ 5 m/s |
| Accuracy (position) | ± 0.1 mm ¹⁾ |
| Repeatability (position) | ± 0.05 mm ¹⁾ |

¹⁾ Reading distance 90 mm.

Mechanics/electronics

| | |
|--------------------------|--|
| Connection type | 1 x M12, 17-pin male connector 1 x M12, 4-pin Ethernet female connector Circular plug-in connector |
| Supply voltage | 12 V AC ... 24 V DC, ± 15 % |
| Power consumption | Typ. 3.5 W |

| | |
|-------------------------------|------------------------------|
| Output current | ≤ 50 mA |
| Housing | Zinc diecast |
| Housing color | Light blue (RAL 5012) |
| Enclosure rating | IP54 (EN 60529, EN 60529/A2) |
| Protection class | III |
| Electrical safety | EN 62368 |
| Weight | 165 g |
| Dimensions (L x W x H) | 50 mm x 40.3 mm x 29.6 mm |

Performance

| | |
|---------------------------------|--|
| Readable code structures | 2D |
| 2D code types | Data Matrix ECC200, QR code |
| Code qualification | On the basis of ISO/IEC 16022, ISO/IEC 15415, ISO/IEC 15416, ISO/IEC 18004 |

Interfaces

| | |
|--------------------------------------|---|
| Ethernet | ✓, TCP/IP |
| Function | Data interface (read result output), FTP (image transmission) |
| Data transmission rate | 10/100 MBit/s |
| PROFINET | ✓ |
| Function | PROFINET Single Port |
| Data transmission rate | 10/100 MBit/s |
| EtherNet/IP™ | ✓ |
| Data transmission rate | 10/100 MBit/s |
| Serial | ✓, RS-232 |
| Function | Data interface (read result output) |
| Data transmission rate | 0.3 kBaud ... 115.2 kBaud |
| CAN | ✓ |
| Function | SICK CAN sensor network CSN (CAN controller/CAN device, multiplexer/server) |
| Data transmission rate | 20 kbit/s ... 1 Mbit/s |
| CANopen | ✓ |
| Data transmission rate | 20 kbit/s ... 1 Mbit/s |
| Digital outputs | 3 (physical, switching, "Result 1" ... "Result 3") |
| Optical indicators | 9 LEDs (6 status displays, 2 LED alignment aids, 1 feedback spot) |
| Configuration software | SOPAS ET (version 2018.04 or higher) |
| Data storage and retrieval | Image and data storage via external FTP |
| Maximum encoder frequency | 300 Hz |
| External illumination control | Via digital output (max. 24 V trigger) |

Ambient data

| | |
|--|---|
| Electromagnetic compatibility (EMC) | EN 61000-6-4:2007+A1:2011, IEC 61000-6-3:2006+AMD1:2010, EN 61000-6-2:2005-08 |
| Vibration resistance | EN 60068-2-6:2008-02 |
| Shock resistance | EN 60068-2-27:2009-05 |
| Ambient operating temperature | 0 °C ... +40 °C ¹⁾ |

¹⁾ To use the product at the maximum ambient operating temperature, mount it with an aluminum mounting bracket (e.g., part number 2113160, 2112790).

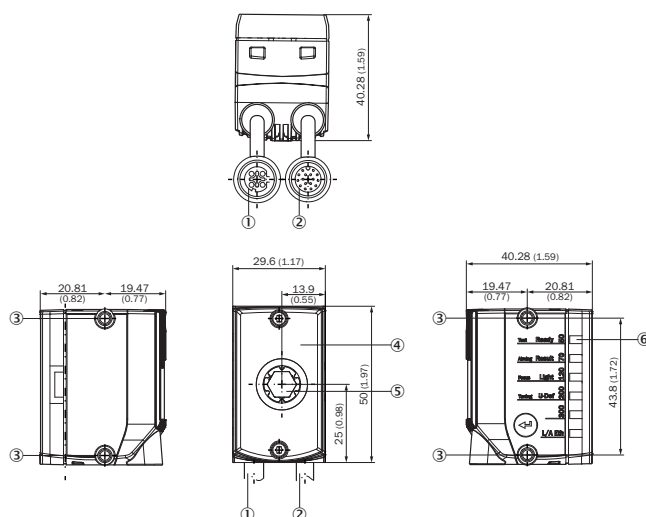
| | |
|--------------------------------------|----------------------|
| Storage temperature | -20 °C ... +70 °C |
| Permissible relative humidity | 90 %, Non-condensing |

¹⁾ To use the product at the maximum ambient operating temperature, mount it with an aluminum mounting bracket (e.g., part number 2113160, 2112790).

Classifications

| | |
|-----------------------|----------|
| ECLASS 5.0 | 27280103 |
| ECLASS 5.1.4 | 27280103 |
| ECLASS 6.0 | 27280103 |
| ECLASS 6.2 | 27280103 |
| ECLASS 7.0 | 27280103 |
| ECLASS 8.0 | 27280103 |
| ECLASS 8.1 | 27280103 |
| ECLASS 9.0 | 27280103 |
| ECLASS 10.0 | 27280103 |
| ECLASS 11.0 | 27280103 |
| ECLASS 12.0 | 27280103 |
| ETIM 5.0 | EC002550 |
| ETIM 6.0 | EC002550 |
| ETIM 7.0 | EC002999 |
| ETIM 8.0 | EC002999 |
| UNSPSC 16.0901 | 43211701 |

Dimensional drawing (Dimensions in mm (inch))







Structure and device dimensions, unit: mm (inch), decimal separator: period

- ① Connecting cable with Ethernet connection (female connector, M12, 4-pin, D-coded), length of cable: 0.25 m
- ② Connecting cable with Power/Serial Data/CAN/I/O connection (male connector, M12, 17-pin, A-coded), length of cable: 0.35 m
- ③ 4 M4 threaded mounting holes: through hole; 6.4 mm deep; max. depth of thread 5 mm
- ④ Viewing window with 8 integrated illumination LEDs, 2 LED alignment aids, 1 feedback LED, 1 time-of-flight sensor
- ⑤ Optics, manual focus adjustment with the help of a focus adjustment tool
- ⑥ 6 status LEDs to display the focus position and working distance and device status (2 display levels)

Recommended accessories

Other models and accessories → www.sick.com/GLS6

| | Brief description | Type | Part no. |
|---|---|--------------------|----------|
| Codes | | | |
|  | Multi code label with 16 data matrix codes for localizing AGV systems, customized alphanumeric code content, self-adhesive. Recommended for GLS611&621. | Multi-code label | 4105695 |
| Mounting brackets and plates | | | |
|  | Bracket with adapter board | Mounting bracket | 2113160 |
| Others | | | |
|  | <ul style="list-style-type: none"> • Connection type head A: Female connector, M12, 17-pin, straight, A-coded • Connection type head B: Flying leads • Signal type: Power, serial, CAN, digital I/Os • Cable: 2 m, 17-wire, stripped, PE-X • Description: Power, serial, CAN, digital I/Os, suitable for 2 A, Changed color coding of the flying leads, shielded • Connection systems: Flying leads • Application: Drag chain operation | YF2ASD-020XXXXLECX | 2081094 |
|  | <ul style="list-style-type: none"> • Connection type head A: Male connector, M12, 4-pin, straight, D-coded • Connection type head B: Male connector, RJ45, 4-pin, straight • Signal type: Ethernet, PROFINET • Cable: 2 m, 4-wire, PUR, halogen-free • Description: Ethernet, PROFINET, shielded • Application: Drag chain operation, Zones with oils and lubricants | YM2D24-020PN1MRJA4 | 2106182 |

Recommended services

Additional services → www.sick.com/GLS6

| | Type | Part no. |
|---|--|----------|
| Extended warranty | | |
| <ul style="list-style-type: none"> • Product area: Machine vision, LiDAR sensors, safety camera sensors, Safety laser scanners, Safety radar sensors, Radar sensors, Fixed mount barcode scanners, Image-based code readers, RFID, Mobile handheld scanners • Range of services: The services correspond to the scope of the statutory manufacturer warranty (SICK general terms of delivery). • Duration: Five-year warranty from delivery date. | Extended warranty for a total of five years from delivery date | 1680671 |

SICK AT A GLANCE

SICK is one of the leading manufacturers of intelligent sensors and sensor solutions for industrial applications. A unique range of products and services creates the perfect basis for controlling processes securely and efficiently, protecting individuals from accidents and preventing damage to the environment.

We have extensive experience in a wide range of industries and understand their processes and requirements. With intelligent sensors, we can deliver exactly what our customers need. In application centers in Europe, Asia and North America, system solutions are tested and optimized in accordance with customer specifications. All this makes us a reliable supplier and development partner.

Comprehensive services complete our offering: SICK LifeTime Services provide support throughout the machine life cycle and ensure safety and productivity.

For us, that is “Sensor Intelligence.”

WORLDWIDE PRESENCE:

Contacts and other locations –www.sick.com