



# SAPPB2D-08X0053

Safe Robotics Area Protection

SAFETY SYSTEMS FOR ROBOTS

**SICK**  
Sensor Intelligence.

### Ordering information

#### sBot Stop



| Robot restart | Primary protective device (access control)   | Secondary protective device (presence detection)                      | Type            | Part no. |
|---------------|--|---|-----------------|----------|
| Manual        | Safety light curtain deTec4 Core<br>Protective field height: 1,200 mm<br>Resolution: 30 mm | Safety laser scanners S3000 Standard<br>Protective field range: 5.5 m | SAPPB2D-08X0053 | 1098641  |

**Included in delivery:** BEF-1SHABPKU4 (1), C4C-EA12030A10000 (1), C4C-SA12030A10000 (1), S30A-6011BA (1), UE410-MU4T0 (1)

This system variant enables a manual restart of the robot.

Other models and accessories → [www.sick.com/Safe\\_Robotics\\_Area\\_Protection](http://www.sick.com/Safe_Robotics_Area_Protection)

### Detailed technical data

#### Features

|  |  |
|--|--|
| <b>Variant</b>                                   | sBot Stop  |
| <b>Product type</b>                              | Hardware and logics  |
| <b>Robot controller</b>                          | Generic  |
| <b>Stopping process of the robot</b>             | Stop only  |
| <b>Robot restart</b>                             | Manual   |
| <b>Interfaces</b>                                |  |
| Communication interface                          | Discrete I/Os  |
| <b>Safe state in the event of a fault</b>        | The safety-related semiconductor outputs are in the OFF state. |
| <b>Safety laser scanners</b>                     | S3000 Standard   |
| Protective field range                           | 5.5 m  |
| <b>Safety task</b>                               | Hazardous area protection                                      |
| <b>Ambient operating temperature</b>             | -10 °C ... +50 °C  |
| <b>Storage temperature</b>                       | -20 °C ... +50 °C  |
| <b>Air humidity</b>                              | 90% at 50 °C (EN 61131-2)                                      |
| <b>Safety sensors</b>                            |  |
| Primary protective device (access control)       | Safety light curtain   |
| Secondary protective device (presence detection) | Safety laser scanners  |
| <b>Safety light curtain</b>                      | deTec4 Core  |
| Protective field height                          | 1,200 mm   |
| Resolution                                       | 30 mm  |
| Scanning range                                   | 15 m   |
| <b>Safety controller included</b>                | Flexi Classic  |
| Safety controller type                           | Non programmable   |
| <b>Voltage supply</b>                            |  |

|                          |   |
|--------------------------|---|
| Supply voltage $V_S$     | 24 V DC (16.8 V DC ... 28.8 V DC)   |
| <b>Performance level</b> | PL d (ISO 13849-1)  |
| <b>Items supplied</b>    | S3000 Standard safety laser scanner<br>deTec4 Core safety light curtain 1,200 mm sender and receiver<br>Flexi Classic main module UE410-MU4T0<br>FlexFix brackets<br>Documentation (operating instructions, SISTEMA file, wiring diagram) |

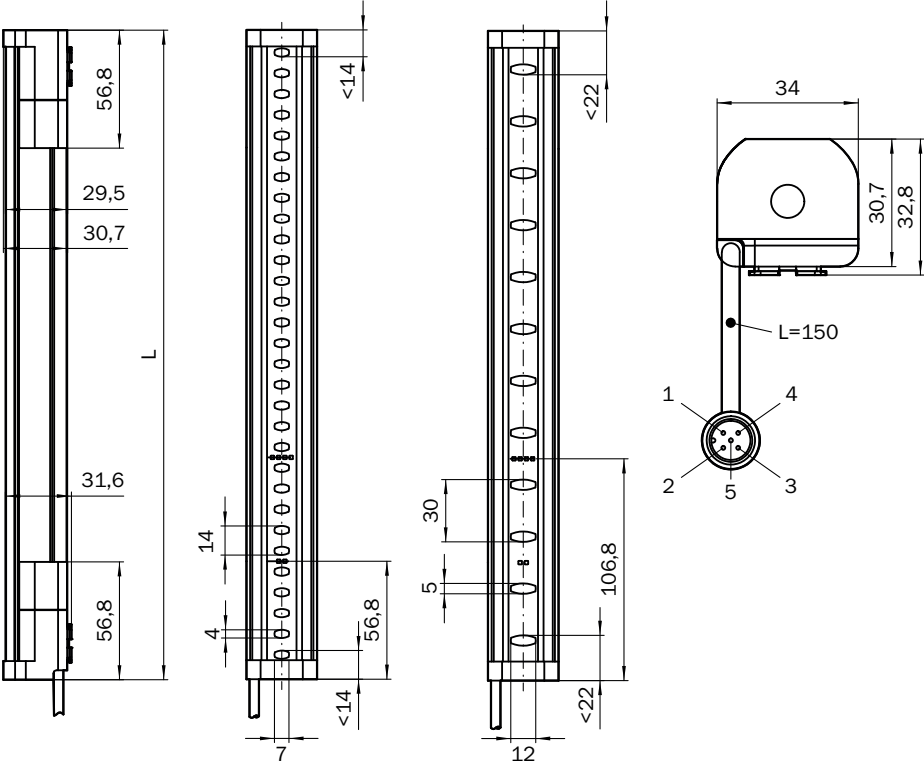
Functions

|   |   |
|---|---|
| <b>Initiate a safety stop</b>                           |   |
| Manual reset  | ✓ |
| <b>Operating mode</b>                                   |   |
| Operating mode selection (implemented in robot control) | ✓ |

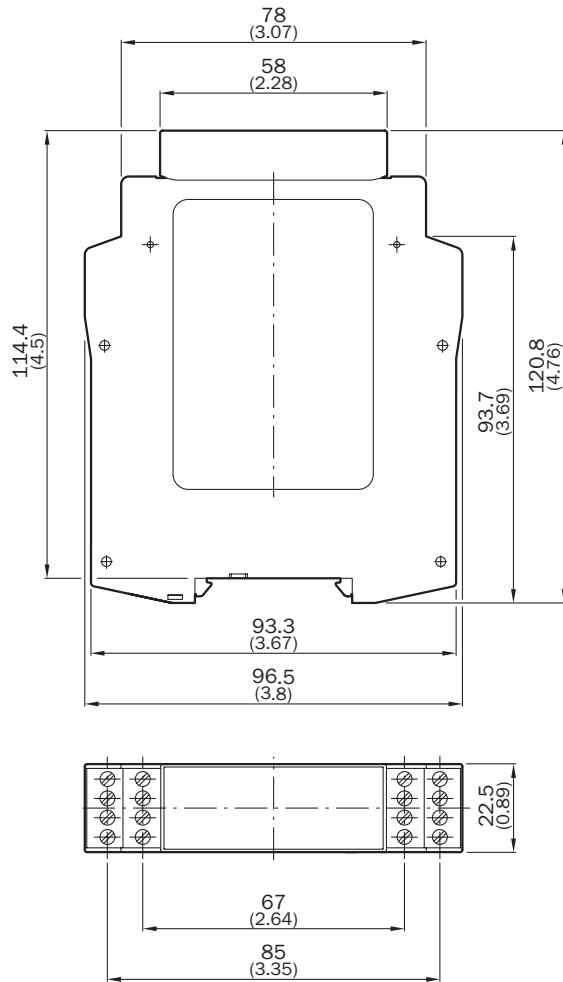
Classifications

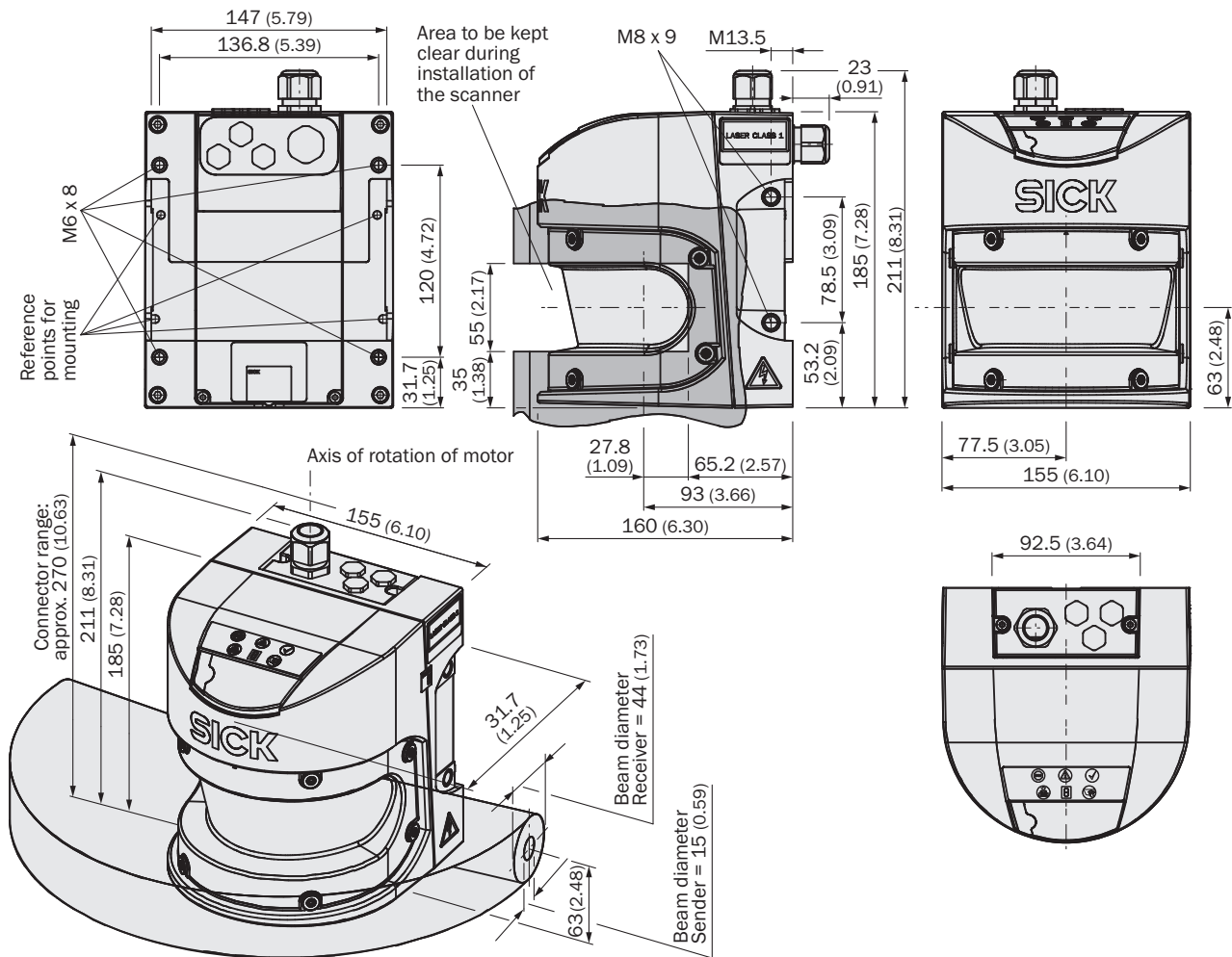
|                       |          |
|-----------------------|----------|
| <b>ECLASS 5.0</b>     | 27279090 |
| <b>ECLASS 5.1.4</b>   | 27279090 |
| <b>ECLASS 6.0</b>     | 27279090 |
| <b>ECLASS 6.2</b>     | 27279090 |
| <b>ECLASS 7.0</b>     | 27279090 |
| <b>ECLASS 8.0</b>     | 27279090 |
| <b>ECLASS 8.1</b>     | 27279090 |
| <b>ECLASS 9.0</b>     | 27279090 |
| <b>ECLASS 10.0</b>    | 27279090 |
| <b>ECLASS 11.0</b>    | 27279090 |
| <b>ECLASS 12.0</b>    | 27279090 |
| <b>ETIM 5.0</b>       | EC001449 |
| <b>ETIM 6.0</b>       | EC001449 |
| <b>ETIM 7.0</b>       | EC001449 |
| <b>ETIM 8.0</b>       | EC001449 |
| <b>UNSPSC 16.0901</b> | 32151705 |

Dimensional drawing (Dimensions in mm (inch))



### Flexi Classic main module





| Protective field height | L             |
|-------------------------|---------------|
| 300 (11.81)             | 313 (12.32)   |
| 450 (17.72)             | 463 (18.23)   |
| 600 (23.62)             | 613 (24.13)   |
| 750 (29.53)             | 763 (30.04)   |
| 900 (35.43)             | 913 (35.94)   |
| 1,050 (41.34)           | 1,063 (41.85) |
| 1,200 (47.24)           | 1,213 (47.76) |
| 1,350 (53.15)           | 1,362 (53.62) |
| 1,500 (59.06)           | 1,512 (59.53) |
| 1,650 (64.96)           | 1,662 (65.43) |
| 1,800 (70.87)           | 1,812 (71.34) |
| 1,950 (76.77)           | 1,962 (77.24) |
| 2,100 (82.68)           | 2,112 (83.15) |

## SICK AT A GLANCE

SICK is one of the leading manufacturers of intelligent sensors and sensor solutions for industrial applications. A unique range of products and services creates the perfect basis for controlling processes securely and efficiently, protecting individuals from accidents and preventing damage to the environment.

We have extensive experience in a wide range of industries and understand their processes and requirements. With intelligent sensors, we can deliver exactly what our customers need. In application centers in Europe, Asia and North America, system solutions are tested and optimized in accordance with customer specifications. All this makes us a reliable supplier and development partner.

Comprehensive services complete our offering: SICK LifeTime Services provide support throughout the machine life cycle and ensure safety and productivity.

For us, that is “Sensor Intelligence.”

## WORLDWIDE PRESENCE:

Contacts and other locations –[www.sick.com](http://www.sick.com)