



# CDM490-0103

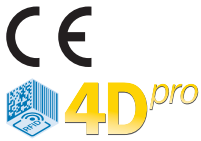
Connection Device Modular

4DPROCONNECTIVITY

**SICK**  
Sensor Intelligence.



Illustration may differ



### Ordering information

Type	Part no.
CDM490-0103	1026264

Other models and accessories → [www.sick.com/Connection\\_Device\\_Modular](http://www.sick.com/Connection_Device_Modular)

### Detailed technical data

#### Features

<b>Brief description</b>	Kit: modular connection module for one sensor, Host and AUX interface available on face plate, power supply CMP490, US power cord
<b>Supported products</b>	CLV69x LMS400
<b>Cloning module support (CMC)</b>	Yes
<b>Supports display module (CMD)</b>	No
<b>Supports power supply module (CMP)</b>	Yes
<b>Supports fieldbus gateway (CMF)</b>	No

#### Mechanics/electronics

<b>Power consumption</b>	Power consumption of the sensor + 0.5 W
<b>Housing</b>	Polycarbonate
<b>Housing color</b>	Blue (RAL 5012)
<b>Enclosure rating</b>	IP65 <sup>1)</sup>
<b>Protection class</b>	III
<b>Weight</b>	870 g
<b>Dimensions (L x W x H)</b>	192 mm x 167 mm x 70 mm
<b>Scanner connection</b>	15-pin D-Sub HD female connector, 15-pin D-Sub HD male connector
<b>Service plug</b>	9-pin D-Sub plug (internal)

<sup>1)</sup> When using a standard connection cable for scanners by SICK.

#### Interfaces

<b>Serial</b>	✓, RS-232, RS-422, RS-485
Remark	Depending on sensor connected
<b>CAN</b>	
Remark	Depending on sensor connected
<b>Digital inputs</b>	Depending on sensor connected
<b>Digital outputs</b>	Depending on sensor connected
<b>Optical indicators</b>	11 LED
<b>Configuration software</b>	SOPAS ET

## Ambient data



<b>Ambient operating temperature</b>	-35 °C ... +40 °C
<b>Storage temperature</b>	-20 °C ... +70 °C
<b>Permissible relative humidity</b>	< 90 %, Non-condensing

## Classifications

<b>ECLASS 5.0</b>	27242208
<b>ECLASS 5.1.4</b>	27242608
<b>ECLASS 6.0</b>	27242608
<b>ECLASS 6.2</b>	27242608
<b>ECLASS 7.0</b>	27242608
<b>ECLASS 8.0</b>	27242608
<b>ECLASS 8.1</b>	27242608
<b>ECLASS 9.0</b>	27242608
<b>ECLASS 10.0</b>	27242608
<b>ECLASS 11.0</b>	27242608
<b>ECLASS 12.0</b>	27242608
<b>ETIM 5.0</b>	EC001604
<b>ETIM 6.0</b>	EC001604
<b>ETIM 7.0</b>	EC001604
<b>ETIM 8.0</b>	EC001604
<b>UNSPSC 16.0901</b>	32151705

## Recommended accessories

Other models and accessories → [www.sick.com/Connection\\_Device\\_Modular](http://www.sick.com/Connection_Device_Modular)

	Brief description	Type	Part no.
Cloning modules			
	External parameter memory for integration in CDB620/CDB650/CDM42x	CMC600-101	1042259
	<ul style="list-style-type: none"> <li>• <b>Connection type head A:</b> Female connector, D-Sub, 9-pin, straight</li> <li>• <b>Connection type head B:</b> Female connector, D-Sub, 9-pin, straight</li> <li>• <b>Signal type:</b> Serial</li> <li>• <b>Cable:</b> 3 m</li> <li>• <b>Description:</b> Serial, unshielded</li> <li>• <b>Note:</b> For PC connection</li> </ul>	YFHDA9-030XXXFHDA9	2103279

## SICK AT A GLANCE

SICK is one of the leading manufacturers of intelligent sensors and sensor solutions for industrial applications. A unique range of products and services creates the perfect basis for controlling processes securely and efficiently, protecting individuals from accidents and preventing damage to the environment.

We have extensive experience in a wide range of industries and understand their processes and requirements. With intelligent sensors, we can deliver exactly what our customers need. In application centers in Europe, Asia and North America, system solutions are tested and optimized in accordance with customer specifications. All this makes us a reliable supplier and development partner.

Comprehensive services complete our offering: SICK LifeTime Services provide support throughout the machine life cycle and ensure safety and productivity.

For us, that is “Sensor Intelligence.”

## WORLDWIDE PRESENCE:

Contacts and other locations –[www.sick.com](http://www.sick.com)